

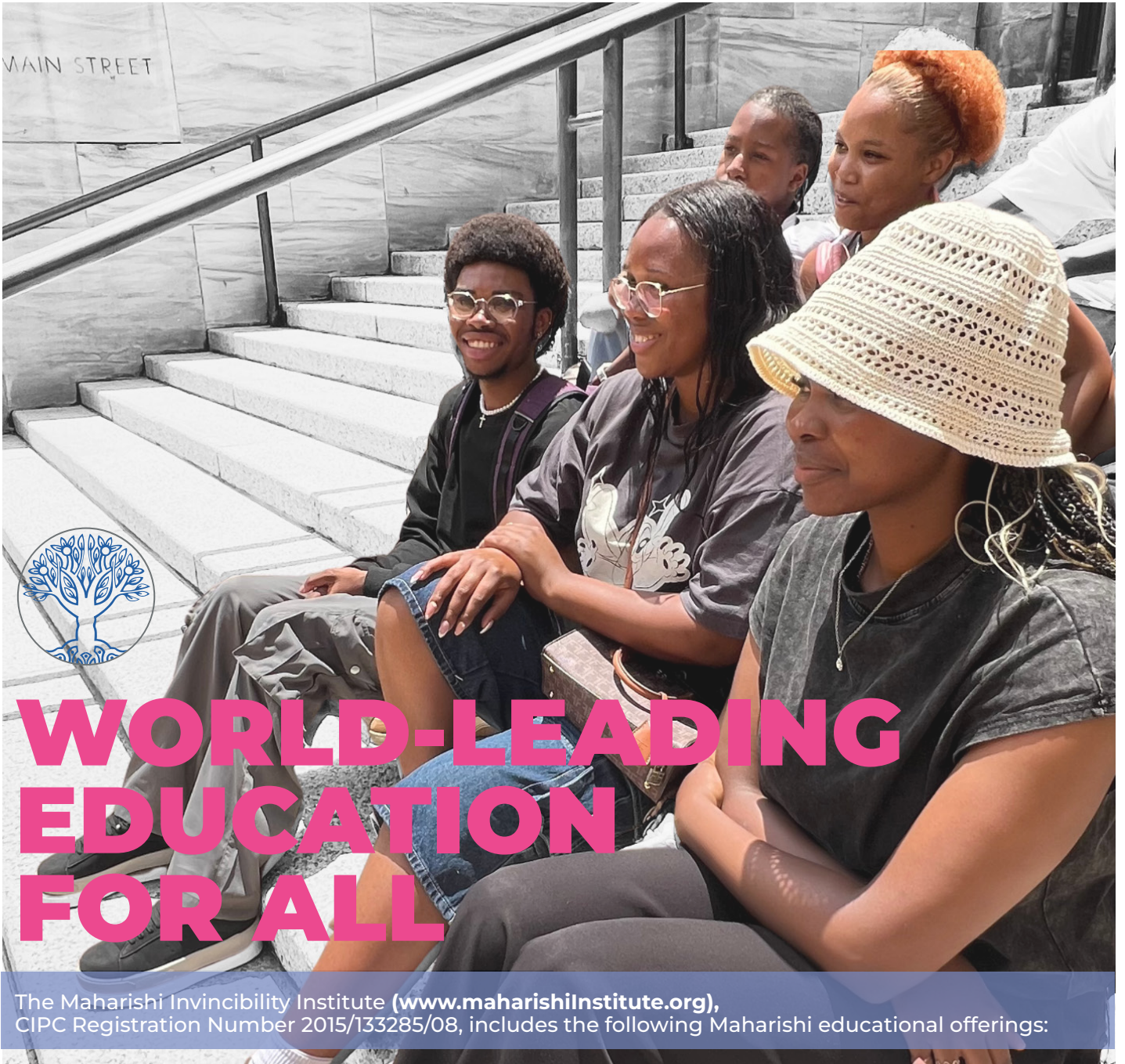


# MAHARISHI

INVINCIBILITY INSTITUTE

World-Leading Education for All

**2026**  
**STUDENT**  
**HANDBOOK**



# WORLD-LEADING EDUCATION FOR ALL

The Maharishi Invincibility Institute ([www.maharishiinstitute.org](http://www.maharishiinstitute.org)),  
CIPC Registration Number 2015/133285/08, includes the following Maharishi educational offerings:

**Maharishi Invincibility Institute Industry Academies**, offering cutting-edge industry certifications, on a local and international level, focused on providing a solid grounding in a 21<sup>st</sup> century career and access to high-level jobs and careers. These career-focused academies include financial markets, cyber security, insurance, digital information technologies with multiple sub-verticals, consciousness professionals, business and data analytics, entrepreneurship, green industries professionals, business process outsourcing, skills development professionals, and digital marketing.

These academies will be available for new intakes each year, based on demand and student numbers.

**Maharishi Invincibility Institute**, a registered private college, offering the National Certificate Vocational (NCV) in ICT, registered with the Department of Higher Education DHET No. 2021/FE07/11 / Exam Centre No. 0899993885).

*Please note that the NCV programme is managed and run under the auspices of the Maharishi Invincibility School.*

**Maharishi Invincibility School**, offering the National Senior Certificate (NSC) with an enriched CAPS curriculum. The school is fully registered with the Department of Basic Education with GDE (Gauteng Department of Education) registration number: 700400269. This is also the DBE EMIS number for the school.

**Maharishi Preschool**, a pre-school offering Montessori preschool learning for children aged 18-months to 6-years old.



# AND WELCOME TO OUR INCREDIBLE CAMPUS

The Maharishi Invincibility Institute (MII) is registered with the Department of Higher Education (DHET No. 2021/FE07/11) as a private college and has primary accreditation and registration with the Services SETA (Primary SETA) under Registration No. 6595 as well as accreditation with a additional SETAs. This means we can offer the most current internationally recognised industry certifications and designations, grounded on solid South African national accreditations, and coupled with relevant work experience.

The International Business Degree is an international business qualification offered via distance education by Maharishi International University (MIU) in the USA. The degree is double-accredited in the USA with global accreditation and full recognition in South Africa by the South African Qualifications Authority (SAQA). Further, the MIU Degree is recognised by all major South African public and private higher education institutions for further studies and is recognised by employers in South Africa, and elsewhere in the world.

Please note that the Financial Sector Conduct Authority (FSCA) has evaluated the MIU BBA degree and recognised it as a fitting foundational degree to launch a financially-related career, whether in the banking, finance, or insurance sectors. Further, this is an accredited programme endorsed by the FSCA in South Africa.

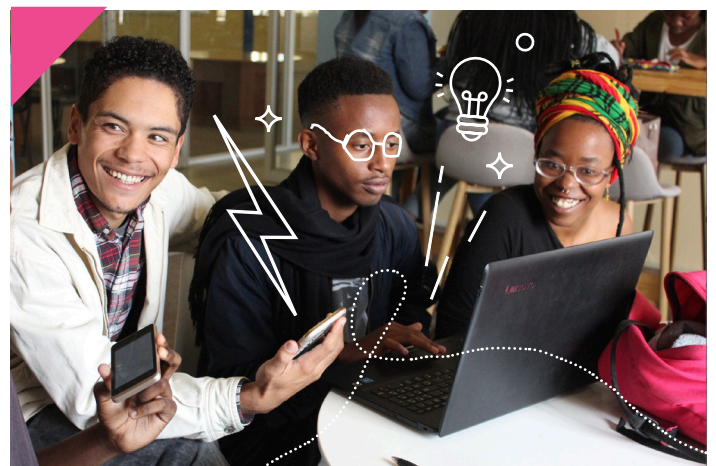


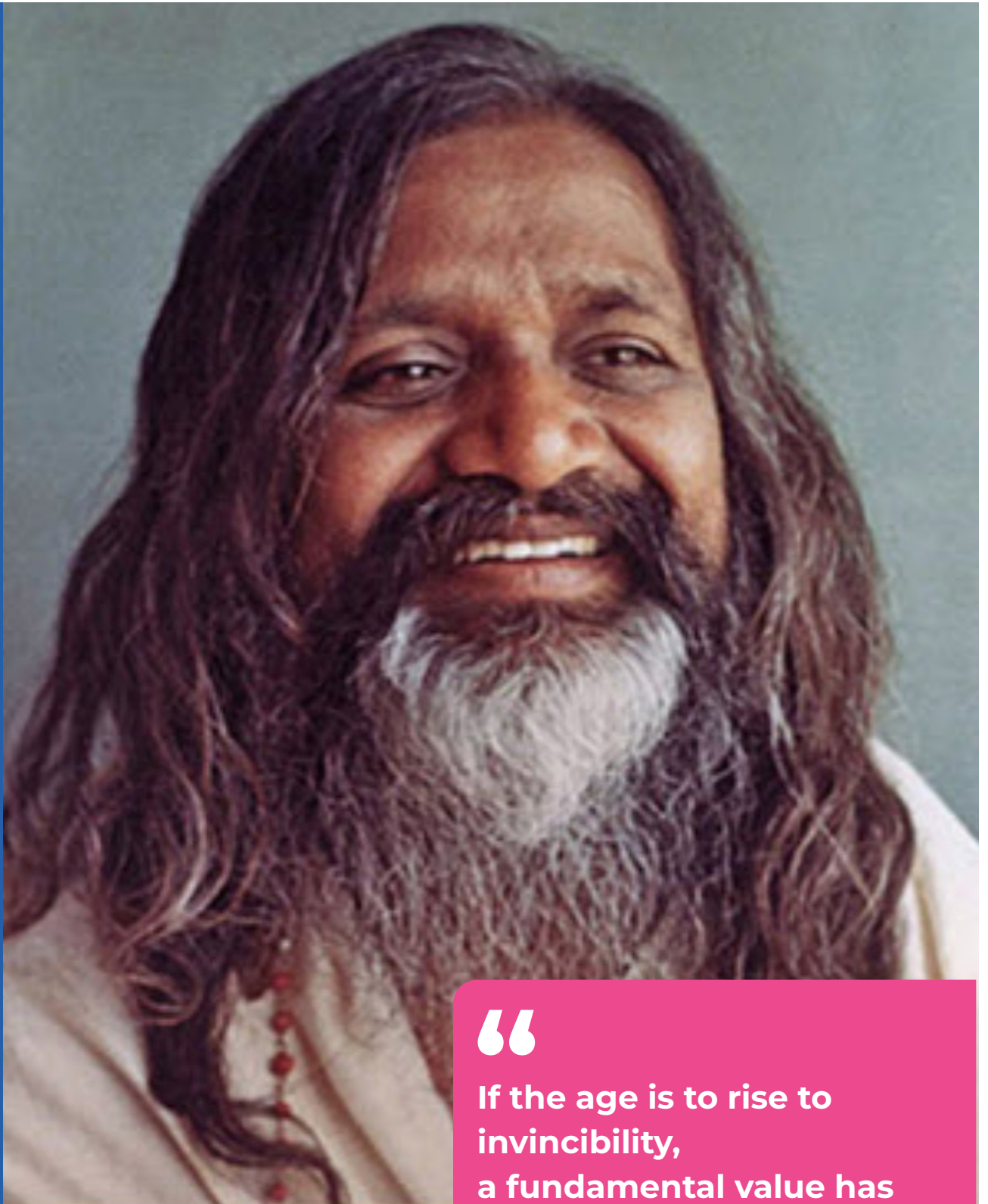
The Invincible College has been established by the Maharishi Invincibility Institute group to offer its own higher education qualifications, and application has been made to the Council on Higher Education and the Department of Higher Education and Training, for accreditation and registration of The Invincible College. Application has been made for the initial qualifications of: 1. The Higher Certificate in Business Management (HCBM) via distance education, and 2. The Bachelor of Business Administration (BBA) via distance education. Registration is pending.



The Maharishi International University USA internationally recognized business degree is not a Maharishi Invincibility Institute qualification. However, Maharishi Invincibility Institute provides financial and technological access to support students with access to this global best-practice qualification, while gaining work experience.

The financial support is an MII award winning finance model, funded by the Consciousness Based Education Trust.





“

**If the age is to rise to  
invincibility,  
a fundamental value has  
to be supplied to the field  
of education: knowledge  
of pure consciousness and  
how to experience it.**

- Maharishi Mahesh Yogi  
Founder of Consciousness-Based  
Education worldwide





**The Maharishi Invincibility Institute**

enriches the learning experience of all its learners through the provision of comprehensive support services, including work experience opportunities, access to campus and industry resources, and bridging programmes, grounded in a rich Consciousness-Based Education learning approach.

## INDEX

FACILITIES SUMMARY	06
THE MAHARISHI INVINCIBILITY INSTITUTE	08
VISION, MISSION, GOALS	10
CONSCIOUSNESS-BASED EDUCATION	12
GENERAL POLICIES	15
STUDENT TERMS OF AGREEMENT	17
ACADEMIC INFORMATION	18
VOCATIONAL (SETA/QCTO courses)	27
STUDENT PAY IT FORWARD AGREEMENT	27
STUDENT CLUBS AND ACTIVITIES	29
FOUNDATION SUBJECT DESCRIPTIONS	31
EDUCATIONAL AND LEGAL STATUS	34
CONTACT DETAILS	35



# FACILITIES SUMMARY

## Finding Your Way Around 9 Nfemi Piliso Street

### Details Of The Facilities

Reception  
Assembly Hall  
Kitchen and Dining Area G  
Courtyard  
Student Counseling Offices  
Department of Student Affairs  
Lecture Theatres / Classrooms  
Skills Development Offices and Classrooms  
Management Offices  
SAP Boardroom  
Marketing Department  
Admin Office  
Academic Coordinator and Faculty Offices  
Student Finance Office  
Student Classrooms  
Consciousness Department  
Work Study Department  
Bryte Insurance Academy  
Career Centre  
Job Shop  
Accenture Innovation Hub  
Contact Centre  
IT Department  
Computer Labs  
(computer-based training and eLearning) Library  
Computer Lab  
TM-Sidhis Meditation Halls

Staff Common Room and Dining Room  
Ladies Staff Siddhis Room

Ground Floor Entrance  
Ground Floor (North Side)  
Ground Floor (South Side)  
Ground Floor (Centre)  
Ground Floor (North East Corner)  
Ground Floor (North East Corner)  
Ground Floor, 2nd Floor and 6th Floor  
1st Floor (North Side)  
1st Floor (West Side)  
1st Floor (South Side)  
1st Floor (South East corner)  
2nd Floor (East Side)  
2nd Floor (East Side)  
2nd Floor (East Side)  
2nd Floor (North Side)  
3rd Floor  
3rd Floor  
4th Floor  
4th Floor North East Corner  
4th Floor North East Corner  
4th Floor South West Corner  
5th Floor  
5th Floor (South East Corner)  
6th Floor (South and West Sides)  
6th Floor (North Side)  
6th Floor (North Side)  
7th Floor: Ladies (North Side) and Men (South Side)  
8th Floor: Ladies (South Side)  
8th Floor (North Side)  
9th Floor

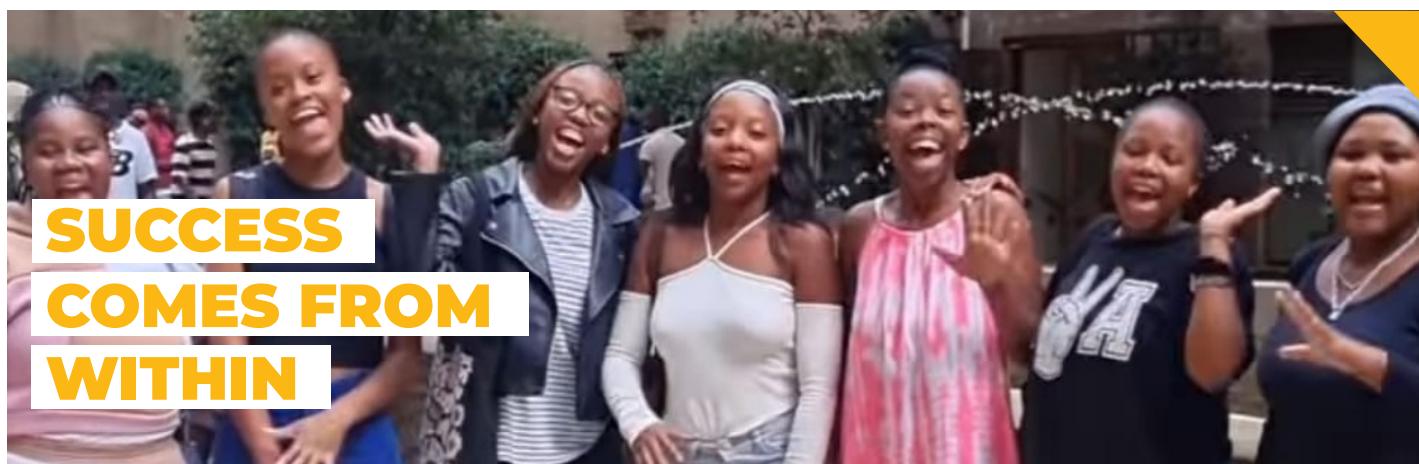
### 40 FOX STREET CLASSES

Foundation Classes and Meditation  
Gym

3rd and 4th Floors  
Ground Floor

### SPORTS FACILITIES

Maharishi Park  
Maharishi Field of Dreams



# WELCOME TO EDUCATION TOWN

Education Town is a place where young people discover their potential and step into a life of possibility. In the heart of Johannesburg's CBD, we are building a complete ecosystem of learning, technology, entrepreneurship, sport, wellbeing, and human development - all designed to bring out the inner genius in every student.



# THE MAHARISHI INVINCIBILITY INSTITUTE

## Developing a new generation of leaders for Africa.

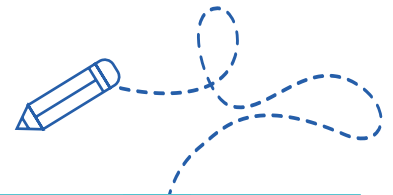
Maharishi Invincibility Institute (MII) offers access to industries where there are a high number of jobs available. The Institute now has multiple national accreditations from key SETAs including the SERVICES Seta, MICTSeta, BANKSeta and INSeta. These range from Level 3 to Level 6 on the NQF.

In addition, MII is registered as a high school from Grade 8 to Grade 12, by the Gauteng Department of Education, through its division, Maharishi Invincibility School of Management. (GDE Registration number 700400269.)

MII provides financial and other access to an internationally recognised business degree, offered via distance education through our international education partner Maharishi International University, based in the USA, while students gain work experience. The MII in this case, provides financial and infrastructural access, computers and Internet access, work experience, bridging programmes, and self-development programmes. MII currently does not offer its own degree programmes.

The Maharishi Invincibility Institute NPC (Registration number 2015 / 133285 / 08) is a non-profit organisation established in June 2007 to develop a new generation of leaders for South Africa.

The Institute is a Public Benefit Organisation. SARS PBO number 930056187.  
 Department of Basic Education Registration number 700400269.  
 Department of Higher Education Registration number DHET No. 2021/FE07/11  
 Services SETA, Accreditation number 6595.



### STUDY OVERVIEW

Students complete a foundation bridging programme through Maharishi Invincibility Institute, before being eligible to join the certificate phase (Phase 2), academies and/or international bachelor's degree programme offered via distance education. This is to ensure that students have sufficient mathematics, language, computer, learning and self-development skills to cope successfully in the specialised programmes.

*Please note: students are required to complete all modules/ subjects in the 1 year Phase 1, Foundation Phase (the foundation bridging programme) before being allowed into the 2 year Phase 2, Certificate Phase. Similarly, to get into Phase 3, students should have successfully passed and completed all modules/subjects in Phase 2. (Exceptions may apply)*

### STUDY OVERVIEW DETAILS

	FOUNDATION	CERTIFICATE	MII ACADEMIES
	PHASE 1	PHASE 2	PHASE 3
Duration	6 months - 1 year	2 years	1-2 years (possible post-graduate year depending on the academy)
Additional SETA / QCTO courses offered	YES	YES	YES

### NOTES

- Students need to pass ALL courses in each phase to be able to move to the next phase
- Students need to have achieved a GPA of at least 2 (68% and above) for all courses to qualify for entry into Phase 3
- Students may complete a SETA qualification in addition to, or as part of each phase, depending on the phase. For example, students in foundation in phase 1 may also have access to an entry-level SETA qualification

### At MII, learning becomes successful through:

- **Consciousness-Based Education**, which includes self-development programmes that develop student holistically, improve learning ability, improve behaviour and lead to greater skill in action. These programmes include the scientifically validated Transcendental Meditation and TM-Sidhis techniques for optimum student development
- **Financial support** through various funding models including bursaries
- **Computer and internet access** to online learning and resources
- **Library access**
- **A daily nutrition programme** through healthy plant-based meals provided at the canteen
- **Experiential learning for your career:**

While studying for their qualifications, students simultaneously benefit from experiential learning programmes. These programmes are necessary to build valuable workplace experience and help make career path decisions. In this regard we offer:

- Career path assistance - training and guidance
- Skills development programmes – learning essential skills for the workplace (both theory and practical)
- A supportive and professional learning environment

### • Health related fitness and sports

Students have access to our “on campus” gym at 40 Fox Street (a small access fee of R50 p.m. is payable for use of the gym), as well as access to the Maharishi Park, Field of Dreams and Club House, situated at 4 Ntemi Piliso Street (The Maharishi Park, Field of Dreams and Clubhouse is run through the gym office for sign-ups and queries).

## OPPORTUNITY

Every student can have a life of success and achievement. The MII approach to student development and education creates stepping stones to personal and economic success.

MII supports students' intellectual, emotional, physical, and spiritual growth. It offers a loving, supportive and nurturing environment, in which every student naturally rises to develop their full and innate potential.



# VISION, MISSION, VALUES AND GOALS

*Growing Greatness – You were born to be great.*

Maharishi Invincibility Institute (MII) develops tomorrow's leaders. Our graduates can work in both the private and government sectors. MII is proud to say that around 95% of MIU degree graduates are employed. Some of the industry vertices where graduates have been placed include global consulting companies, the environmental sector, the advertising and communications sector, the information technology sector and the business process outsourcing sector. This supports the growth of a values-based and prosperous South Africa.

## VISION



- Enlightenment for every individual and invincibility for South Africa
- Creating an ideal society in South Africa and across Africa

## MISSION



- Excellence in Consciousness-Based-Education (CBE)
- 100% pass rates, graduation rates and job placement rate for degree graduates
- Self-sufficiency, scalability, replicability and sustainability of the model so a significant number of youth may be positively impacted
- Invincibility (creating and radiating peace and progress on campus and throughout society)
- To empower the youth of Africa to become employable future leaders, and to uplift their communities, provide for their families and ultimately live a meaningful life of freedom and prosperity

*Such is the legacy that the institute aspires to.*



## VALUES



- Established in Being perform action (meaning develop your inner Consciousness and act from a place of silence within for more powerful action)
- Speak well of others – when we emphasise what is positive in the people around us we help them to grow in the best way. If we talk about negative qualities then we are in danger of just making those negative things stronger, and we are filling our own minds with those negative thoughts, which does not help our personal growth.
- Be together
- Honour time – be on time for all classes and meetings. This shows respect for others and brings greater efficiency.
- Ideal behaviour – always do what is best for our own growth, and at the same time what is best for others.
- Inspiring appearance – dress in the best way we can. This inspires the people around us and they respect us more
- Maintain purity – of thoughts, speech and action
- Radiating truth – honesty is the best policy. Always speak the truth. Speak in a way which is constructive and positive.
- Uphold positivity

*All of these values sound like they may be difficult to master. What is fortunate is that when we develop our minds through the practice of Transcendental Meditation we easily and naturally behave in a more and more positive way.*

**These values can be achieved by everyone.**

They are the basis of great leadership

## GOALS



- To develop:
- 100 000 leaders for the future of South Africa, and provide them with the necessary skills to succeed in life, business and relationships.
  - Ethical and moral leaders for South Africa.
  - Business leaders who lead their organisations along the right path
  - Leaders who are blessed with healthy, prosperous personal and family lives
  - Leaders who are committed to uplifting relationships and the national unity



**GROWING  
GREATNESS**

# CONSCIOUSNESS - BASED EDUCATION

---

*Education that develops your total brain functioning*

**INCREASE YOUR ACADEMIC PERFORMANCE, IQ, CREATIVITY and PRACTICAL INTELLIGENCE**

## Education for Excellence

The Maharishi Invincibility Institute (MII) is all about excellence. We are setting a new standard for education where each student is cultivated as a perfect and whole individual, who loves himself or herself, who is kind to others, and who is free from problems and mistakes. Each student will be instilled with the power, knowledge, and vision to lead his family, nation and world to the greatest heights of achievement.

Clearly, such a holistic and effective approach to learning represents the pinnacle of education and presents a beautiful vision of possibilities for society. Wherein lies the secret to accomplishing this extraordinary goal? It is in the Consciousness-Based approach to education, developed by Maharishi Mahesh Yogi. Consciousness-Based Education connects each discipline and each learning point with your personal experience.

## How does it do this?

- *First* - by exploring consciousness as the innermost Self
- *Second* – by exploring each discipline (Math, Language, Business, etc) at that same level of pure consciousness, the level of the innermost Self
- *Third* - by experiencing and exploring the impact of expanding awareness of consciousness on the manifested knowledge of each discipline in both a subjective and objective way

The universe is forever in motion and continually re-creates itself in a progressive, orderly, and evolutionary way. These same orderly laws and principles that maintain the universe also guide human intelligence and evolution. Therefore it is easy and natural to connect all the courses of study which are outside you, to the reality which is inside you.

Consciousness-Based Education is not only a powerful intellectual discipline: it will allow you to grow as a person who acts from the deepest level of consciousness so that you spontaneously live in accord with natural law.

## Success rates of Consciousness-Based Education

The results throughout the world have shown the success of Consciousness-Based Education in improving the academic potential of students like you. The following are a few examples: At the Maharishi School of the Age of Enlightenment in Iowa, the average student score on standardised tests is in the top 1% of the United States. In the Maharishi School in England, every student received qualifying scores for university in the national exams. The school was ranked as one of the top 12 in the rankings of over 4,400 private schools. At the Maharishi Schools and Academies in India, 100% of the students in 45 schools achieved qualifying scores for colleges and universities.

Consciousness-Based Education is being introduced in many schools in the US, Brazil, Ecuador, Australia, Peru and Venezuela

## What is Consciousness-Based Education?

Consciousness-Based Education is the most theoretically profound, scientifically researched, and practically developed system of education in the world currently.

To create a stress-free, supportive learning environment, students learn the Transcendental Meditation and TM-Sidhi® Programme. Twice daily practices of these methods are an integral part of the system. The final frontier of knowledge is the field of consciousness. Consciousness-Based Education is the only system where all disciplines are connected back to the student himself or herself. Displays of total and specific knowledge allow daily 'learning through seeing'. Consciousness-Based Education has been available for over 40 years throughout the world. It has transformed the process of learning in all institutions of learning where it has been implemented.

*As a result, our campuses are safe and offer an environment free from smoking, alcohol, and drugs.*



# INSIDE OUT LEARNING



Simply put, Consciousness-Based Education is not only concerned about the knowledge and how the student learns but is also concerned about an individual's development independent from the learning and teaching component.

People have pondered throughout the ages... Is it possible to educate a man and raise him to a state of perfection? Certainly, today's prevailing systems of education have not done so. Is it possible for education to bring happiness and fulfilment? Most educational institutions have little focus on this goal. Even graduates of the most prestigious universities and schools are prone to high levels of stress, unhappiness, and mistake making.

Following a Consciousness-Based Education approach to education requires a different daily schedule. To understand this better a typical day of an MII student is described below:

### A Day in the Life...

You begin each academic day with a 20-minute yoga asana practice, involving simple stretch exercises, followed by a programme that includes 20 minutes of Transcendental Meditation. Your mind dives deep into our own Self, and you experience the most silent level of your inner consciousness. At a later date, you learn the advanced TM-Sidhi® Programme.

Through daily practice of this programme, you begin to systemically expand your mind and use more of your mental potential. Then you begin your first academic subject of the day. Later, you also get to put whatever you learn into practice in the practicum and work-study programmes. As you assemble the points of knowledge required to solve the Maths, Computer, or Language problems presented by your teacher, a remarkable process begins: through the effects of the meditation technique your mind becomes more flexible and you can achieve your first breakthrough in problem-solving by relating inner awareness to outer disciplines.

This integration of the brain increases as you advance through each course. To help you integrate this new inner growth and development, special charts have been designed that present the lessons of each subject in terms of the whole discipline and your personal experience.

As the days, months, and years of your study progress, you become thoroughly versed in each modern discipline. At the same time, the unbounded nature of consciousness becomes fully integrated into your mind and body, and you begin to live a life filled with much greater happiness, inner peace, and fulfilment.

### CHECK THESE OUT...

**Consciousness-Based Education** offers a stress-free learning environment.



**Academic Excellence** in a loving, friendly and supportive campus.

You can experience the **most silent level** of your inner consciousness.



# GENERAL POLICIES

## Expectations from the Students

Maharishi Invincibility Institute students are expected to adopt organizational values and adhere to the following rules at all times throughout their studies:

### We value:

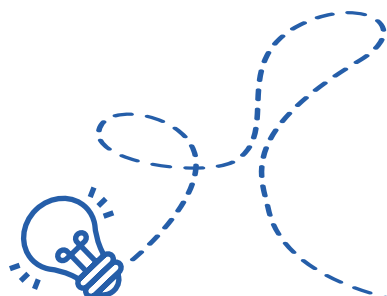
- Respect for the organizational rules and policies, they are meant to protect you as well as the organization.
- Take care of the organisation with love and respect. Treat the Institute as your own home by keeping it clean.
- Respect for other students and staff - do not tease or pick on anyone, or hurt anyone's feelings.
- Respect others' possessions - never take an item that doesn't belong to you, without permission.
- Display positive and dignified behaviour at all times.
- Personal development – attend daily group meditation and academic classes on time.
- Be self-reliant - do what you know is right, without having to be reminded.
- Dress in a dignified, presentable, appropriate and professional way.  
If you could fit in a company, you are dressed correctly.
- Maintaining a peaceful, non-violent environment on the Maharishi Invincibility Institute's campus.
- Communication – for any initiative such as sport, art, choir, events, etc. Communicate with Department of Student Affairs and get written permission.

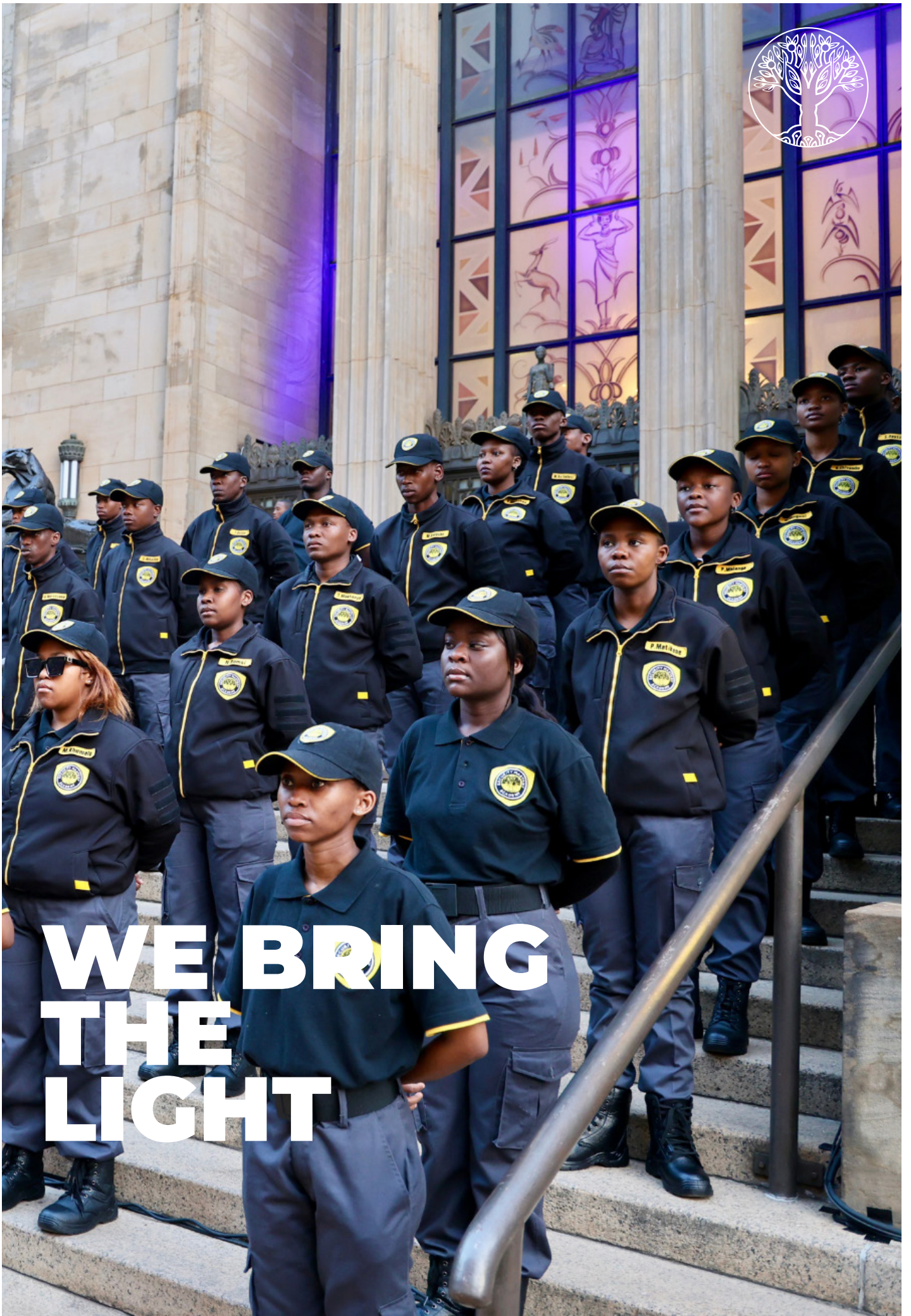
### The following rules should be obeyed at all times:

- Adhere to practicum, work study, rules and regulations.
- Cheating in assignments or exams, or allow anyone else to do the same is a serious offense that could lead to expulsion.
- Fraud is a criminal offence, this includes forging signatures, giving a false name or identity to the staff member, signing of another student in the attendance register, etc
- Keep the building clean. Littering and drawing graffiti on the institution's property is prohibited
- No sexual activity is allowed on campus.
- Abuse in any form (sexual/verbal/physical) will not be tolerated.
- Alcohol, smoking, and drugs are prohibited on campus.
- Never remove anything from campus without permission - including books, supplies, and electronics.
- Never open the fire escape doors unless there is an emergency.
- Conserve energy and resources. Do not leave taps running.
- Do not use mobile phones during class for personal use.
- Keep the toilets and bathrooms clean.

### The following rules should be obeyed at all times:

1. Student Code of Conduct
2. Dress code policy
3. Drug and alcohol abuse policy
4. IT policy
5. OHASA rules
6. Meditation policy and procedure
7. Student agreement
8. Student Pay It Forward Agreement
9. Admissions and registration policy
10. Library policy
11. Plagiarism policy





**WE BRING  
THE  
LIGHT**

# STUDENT TERMS OF AGREEMENT

*(This will be updated from time-to-time)*

**Every student, by signing the Student Declaration and Agreement, undertakes to abide by and honour the rules of the organisation:**

I understand that if I do not reasonably follow the above requirements I may be subjected to a disciplinary process, which may include verbal or written warnings, suspension, or being asked to leave the institution. The Maharishi Invincibility Institute operates based on structure, cooperation, teamwork, friendship, and an orderly learning community. True freedom comes from self-discipline. Personal integrity, honesty, and honour are essential qualities of an ideal student and a developing leader. Students have a responsibility to follow the highest standards of conduct, both in class and outside of class. This includes cooperating fully with the faculty in maintaining the policies of our institution and notifying the faculty of any breaches of these standards or policies, whether by themselves or others. Students may not solicit other students to participate in any activities that violate any policies and procedures.

I agree to and undertake to follow all of the academic rules of the institution and all of the rules and regulations of the campus.

I agree to participate in all additional/special lessons or courses that I may be asked to attend, to improve my knowledge and ability in any subject, such as Maths, English, etc. I understand that it is a condition of my acceptance that I agree to attend all lessons and courses that I am asked to attend. These additional lessons may take place on a Saturday or before/after regular weekday classes. I will be responsible for making all transport arrangements to attend all of the lessons that I am asked to participate in.



# ACADEMIC INFORMATION



## Admission and registration to MII

### Admission

All students aged 18 upwards are eligible to apply for the full-time, Foundation Programme. Students should have a National Senior Certificate (Matric), and should also pass the MII entrance tests, including a personal interview. Students are to refer to the Admissions Policy for further details on Admission requirements.

### The Block System

MIl follows a course-scheduling system known as the 'block system'. The block system allows students to fully immerse themselves in one subject (or two subjects) at a time, so they can fully focus on that subject. Once that subject is complete, it is done and 'banked' and the student can move on to the next subject. This is an approach used by Maharishi International University and leading business schools around the world. Educational research has shown the approach to be effective in allowing students to maximise their focus, and to achieve better academic outcomes on the entire academic qualification.

At MII, one block is equal to four full weeks, while a 'half-block' is equal to two full weeks. A course is run over half, one, or two blocks and no more than three courses can ever be taken during a two-block period i.e. 8 weeks. Shorter courses such as the forest academies are run over half a block i.e. 2 weeks (known as a 'short block') while academic courses are generally run over a full block ('full-time') or two blocks ('part-time').

The block system also allows students to write only one exam at a time; ie every month at the end of the current block, you will write the final exam for that subject. Once the learner has completed the course they will be given their final result and will not be required to write exams again on that subject at the end of the year. It means you don't have the huge stress of writing 5-7 exams at the same time in June and again in November, and allows you to keep steady focus throughout the year.



## 9 Ntemi Piliso Street

### Maharishi Invincibility Institute Head Office

9 Ntemi Piliso Street serves as the Johannesburg head office of Maharishi Invincibility Institute (MII) and the central hub for our international and South African business qualifications.

This building houses our Human First Call Centre, Financial Markets Academy, and Imvula Securities Stockbroking Firm.

From this location, students gain practical workplace experience alongside academic study, preparing you for careers in business, finance, insurance, and client engagement within a professional corporate environment.



## 40 Fox Street

Foundation Phase | Security Mastery Academy | Maharishi Invincibility High School

Our 42,000m<sup>2</sup> flagship campus at 40 Fox Street is home to Maharishi Invincibility Institute's Foundation Phase programmes, the Security Mastery Academy, and Maharishi Invincibility High School (MIS). This dynamic learning environment integrates Consciousness-Based Education with career-focused training, allowing students to develop academically while building practical skills in leadership, discipline, and professional readiness for the modern workplace.



## 58 Marshall Street

The Invincible College | Maharishi Preschool

58 Marshall Street is the home of the Maharishi Preschool and the The Invincible College. This building supports learning for early childhood development, and at post-secondary level.

With a focus on nurturing creativity, confidence, and cognitive development from the earliest years, this space reflects our commitment to providing Consciousness-Based Education within the heart of Education Town.

### Registration

Once a student has been admitted into MII they will need to register for each study block before the start of the study block.

No person may attend any course facilitated through MII unless he or she is admitted as a student and has registered for the applicable study block. Registration is renewable each block, subject to the conditions set out herein, and as more fully explained in the Registration Policy.

Students meeting the following criteria may register for courses:

- Not placed on Academic Suspension.
- Not having any outstanding payments due.
- Achieved the attendance requirements. [required to maintain 80% attendance on each course per block]
- Not placed on DFHP attendance suspension [This includes 80% attendance in the DFHP twice-daily practices]

Students who failed the previous block will have to get permission from the Academic Coordinator to register for classes. Students who miss a course or can not complete a course due to reasons accepted by the DSA and/or Academic department will be required to bring proof of absenteeism when re-registering for the course.

*For full details on all fees applicable, including admission and registration fees, please refer to the Student Fees handbook.*



## Grading and Attendance

Grading is the means for evaluation of the courses and includes class participation, quizzes, oral and written examinations, projects, and papers. In addition to receiving academic credit for any course, students are expected to attend all classes and participate fully. Students failing to achieve an 80% or higher class attendance will not be allowed to write the final exam and will by default fail the course. (i.e. The number of sessions students are allowed to be absent = 4 weeks block, 4 days (i.e course run over 1 full block), 8 weeks block, 8 days (i.e. course run over 2 full blocks). Please note that in the Forest Academy courses, students are not allowed to miss the first 3 days of the course. Should they miss any of the first 3 days they will not be allowed to continue with the course and will need to apply for the course again.

Grades are emailed to the Maharishi Invincibility Institute Deputy Registrar for each course as soon as the grades have been finalised. When students receive a grade report they will have a percentage rating, a symbol rating and a Grade Point Average (GPA). Students who want to apply for the MIU BBA degree programme in phase 3 will be required to maintain a minimum GPA of 2.0 on all non Seta related courses in phase 1 and 2. Students failing meet this minimum requirement will not qualify to apply for the MIU degree programme in phase 3.

## Grade Point Average Calculation

GRADE POINT CALCULATIONS AND NARRATION			
MARKS RANGE (percentage)	SYMBOL	GRADE POINT	NARRATION
97% - 100%	A+	4	Exceptional work, clear command of the details that make up the whole
93% - 96%	A	4	Excellent
90% - 92%	A-	3,7	Though Excellent, there were detractors
87% - 89%	B+	3,3	Approaching excellence
83% - 86%	B	3	Good, Competency understood and demonstrated, though not fully stabilized
80% - 82%	B-	2,7	Needs Attention, but still competent
73% - 79%	C+	2,3	Very close to competent
68% - 72%	C	2	Needs improvement; progress is less than adequate, though still passing
below 67%	NC	0	No credit - did not attain course objectives at a minimal level

*\* To qualify for Supplementary Exam: 63% - 67%  
(Exceptions: Forest Academy/Induction courses: no Supplementary Exam)*

*\* Any student who receives 62% and below must repeat the course*



## Publication of Results

Results for tests and assessments are published by way of a percentage or symbol on the Education Department notice board and will also be available on the student Moodle learner management portal.

Results for exams and courses are published on the Education Department notice board and will also be available on the student Ed-Admin system.

It's the responsibility of the student to ascertain their results and whether they are required to write a supplementary exam by checking this notice board daily as well as the online portals. Final exams scripts are not returned to students. Students will be able to view their final exam scripts or request a remark subject to a fee being paid.

The final results obtained by a student in any Phase or Qualification will not be printed unless s/he has paid outstanding fees, or come to a payment agreement with MII. A qualification will not be conferred on a student unless s/he has satisfied his/her obligations to MII in terms of outstanding fees, practicum and Community Service and any other provider-discretionary requirements as agreed on at programme admission.

This includes adherence to the terms and conditions of the Student Pay It Forward Agreement.

## Suspension

- **Academic Warning:** Students failing 2 blocks/courses will be placed on academic warning.
- **Academic Probation:** If students given 'Academic Warning' fail to improve their grades, they will be placed on academic probation.
- **Academic Disqualification:** Failing to improve performance to B average after being placed on probation students will be disqualified from the program. They will have to reapply to the institute to be reinstated to the program.

## Deregistration

- If a student wishes to take a break from their studies the student must formally inform the institution, and complete the necessary forms to deregister. Should the student wish to return at a later date they will be required to re-register as a student and can proceed from where they left, subject to the course still being offered. A re-registration fee will be payable.
- Missing two blocks in a row, without notifying the Institute, will automatically be considered as a deregistration. Students who fail to formally inform the institution of their leave of absence and who are automatically deregistered will be able to apply for acceptance back onto the programme however such acceptance will be at the discretion of the Institute. A re-registration fee will be payable.





**BUILDING  
THE FUTURE  
TOGETHER**



## Use of books, materials and electronic learning resources

1. All students receive a Maharishi Invincibility Institute email account (through Google Apps), which gives you access to email, Google docs, a calendar and so on.
2. All students receive a Microsoft account to access their Digital Literacy courses.
3. Students have access to numerous other software learning support programmes, such as MediaWorks English and Maths, Percipio online learning, etc.
4. Study materials/notes are provided to students for virtually every subject. These photocopies cost a lot of money to produce and students are asked to protect their materials. Should you lose the copies given to you, you will be required to *pay for the costs to re-print the material. Students must consult the library policy regarding the full terms and conditions of using library resources*
5. When using any of the online learning/computer-based learning resources, students are expected to follow the rules of the computer labs and Invincible Outsourcing.

## Academic Counselling

*The Maharishi Invincibility Institute offers a free counselling service for students in Johannesburg, via the Department of Student Affairs. All counselling sessions are treated with the strictest confidentiality.*

There are two types of counselling:

- Life and emotional support
- Academic Counselling

## Academic Honour Code

Experience has shown that education is most successful when standards of academic honesty are consistently observed. The purpose behind traditional standards of academic honesty is to promote the ideal learning experience. The educational process enables students to cultivate self-sufficiency. In representing their achievements honestly, students find confirmation and support within the educational environment. The faculty can only provide optimum support and feedback if they have an accurate assessment of the student's progress.

Any work represented as one's own must be the product of your individual thinking and research. This applies to all assignments, examinations, quizzes, and presentations. In composing assignments, students are encouraged to get feedback from others on their work in progress but are expected to do the writing themselves.

Plagiarism is the unacknowledged taking and use of another person's thoughts, writings, inventions or work as one's own. It is an academic offence and seen with the same level of seriousness as cheating in examinations or stealing. Culprits may face severe disciplinary action.

If a student knowingly allows another student to copy their work, that student will be subject to the same disciplinary consequences as the plagiarising student. Any ideas drawn from other scholars must be adequately credited. This includes not only direct quotes, but also ideas drawing from course syllabi, videotaped lectures, and other publications.

Students who take responsibility for attendance records or any other records contributing to the final grade of a course are expected to be faithful and accurate in their reporting.

If a student is not able to uphold these standards, then naturally credit cannot be given for the course.

Academic and disciplinary consequences will also follow as a means of alerting the student to the importance of these principles in promoting ideal education. A second violation, or an initial incident that is considered by the faculty to be serious, may lead to suspension.

Students should consult the Plagiarism Policy as well as the Student Code of Conduct for further details

## Student Leadership Forum

Maharishi Invincibility Institute has a Student Leadership Forum, with several broad mandates:

- To develop enlightened leaders for the future.
- For leadership training and practical experience.
- To create a means for students to voice out their views, ideas, and concerns in a more constructive, productive and meaningful manner
- To focus on various aspects of institutional life that affects the students

*Maharishi Institute is proud of its students' leadership abilities and wisdom, and passionate about producing leaders for the future of South Africa. These will be leaders who are endowed with vision, wisdom, an ethical compass, positivity, and caring for all. They will be the embodiment of true servant leaders.*

### Student Leadership Forum Composition

Every class (level) votes for their class President. Class Presidents sit on the Student General Council. The Student Leadership Forum comprises elected representatives from the class Presidents.

The SLF elected representatives form both an executive structure, which includes the SLF Chairperson, Deputy Chairperson, Secretary General, Deputy Secretary, Treasurer and Deputy Treasurer as well as portfolio holders.

There are specific portfolio roles as follows:

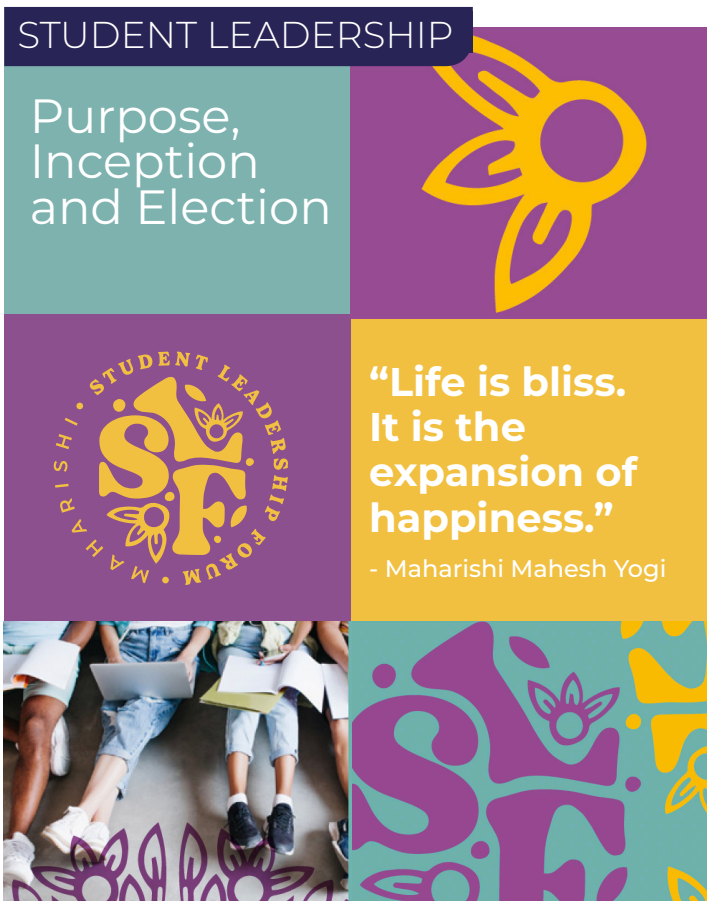
- Student Leader: Head
- Student Leader: Consciousness Department
- Student Leader: Academic Department
- Student Leader: IT Department
- Student Leader: Marketing and Admissions Department
- Student Leader: Skills Department
- Student Leader: Business Development Department
- Student Leader: Student Affairs
- Student Leader: Foundation Department



The specifications of each portfolio are on the student government constitution (still to be approved).

### Duties

- Each president in the Student Leadership Forum has working committees within their portfolio
- These student structures are important to empower students to develop their leadership skills, wisdom, and creativity, and to do things for themselves with minimal support and control from school management.



BODY	SCOPE
Board of Trustees	Ultimate Decision makers
MANCO (Management Committee)	Sits in Johannesburg and sets the Vision, Strategic imperatives, Policies, Model and approaches for the Institute
ALT and OLT	Holds accountability for the operational day-to-day functioning of the Institute and all the departments
Student Development Committee	Comprise of the Academic Director and the Operations Director. Receives reports and proposals from the DSA and SLF, makes recommendations to ALT and OLT and reports back to the DSA and SLF
Department of Student Affairs	The main liaison officer with the students on student matters
Student Leadership Forum	A Forum comprising both an executive structure, which includes the SLF Chairperson, Deputy Chairperson, Secretary General, Deputy Secretary, Treasurer and Deputy Treasurer as well as portfolio holders. Together with the Department of Student Affairs, compiles student reports and proposals to submit to the Student Development Committee
Student General Council	Comprises all class presidents. A forum for the Student Representative body to give and receive feedback from/to the class presidents.
Class President	Chosen by each class, from syndicate leaders, collects and compiles class reports. Convene and preside over class general meetings
Syndicate Leader	Chosen by Syndicate members. Compile group issues for submission to the Class presidents



# VOCATIONAL QUALIFICATIONS

---

MII Students have the option to register for vocational qualifications which will be in addition to their general studies. Separate/additional policies and procedures apply to students who are registered for the qualifications accredited by the SETA or QCTO.

## SETA Related Qualifications, Academies and Learnerships

- Upon enrolling for any SETA or QCTO related qualification a student will be issued with an induction document that will set out the roles, rules, obligations and responsibilities of the learner together with full information on the course.
- Full details of the grading, assessment and moderation of the learner documents will be covered in the learner induction document.
- Full details of late submission of assignments and non-compliance can be found in the learner induction document.
- Students are required to attend all learning programmes under the SETA-related courses to enable them to successfully complete the programme; failure to do this will result in disciplinary action.
- Students needing workplace experience for completion of the qualification will enter into an agreement.
- Students should note that any SETA programmes offered by the Institute have their own rules and requirements and the student agrees to abide by these rules should they be enrolled.

# STUDENT PAY IT FORWARD AGREEMENT

---

*Students participate in the Pay it forward Programme*

*Students are to refer to the Student Pay it Forward Agreement for full details of MII's award winning "Pay It Forward Model".*



## COURSE REPEAT FEES

Please refer to the updated Fee Schedule for full details of the course repeat fees

### PLEASE NOTE THE FOLLOWING

- Repeat fees apply to students who failed the supplementary examination on that subject or were suspended due to attendance issues or any other misconduct within the Institute.
- Students who were permitted to miss the course, due to sickness, permitted family issues, or were on maternity leave will not be charged.
- These amounts are payable before the commencement of the course. If a student does not pay the required fees, they will not be allowed to attend the course.
- Arrangements to pay for a 'redo' course, via work-study or through payment instalments must be organised by the student concerned in advance.
- Work-study advances are only applicable to students who are on work-study and can only be allocated to a maximum of two months. The remaining amount must be paid in cash.



# STUDENT CLUBS

---

## Current Offerings

Student Activities, Clubs, and Extra-Murals:  
All students are encouraged to create and sustain clubs and societies to promote the quality of life on campus. Any student may begin a club or society provided it meets the process defined by the Management/Academic Coordinator and is approved by the Department of Student affairs.

Clubs already set up by MII include the following:

1. Running club
2. Boxing Club
3. Football Club
4. Basketball Club
5. Netball Club
6. Chess Club
7. Cheerleading Club
8. Art Club





# STUDENT CLUBS

# FOUNDATION SUBJECT DESCRIPTIONS

The following subjects are done as part of phase 1 (foundation) of your study programme. (Please note that some of the courses might be replaced with an equivalent course depending on the courses being run.)

Students may be allowed to complete a SETA qualification alongside the foundation courses. The terms and conditions relating to the SETA qualification will apply, if appropriate.

SUBJECTS	
UNDERSTANDING CONSCIOUSNESS BASED EDUCATION	This course provides the student with the knowledge and understanding of the system of Consciousness-Based Education as a holistic method for the development of full human potential for the individual, and the positive impact this system has on each community, every nation and the world as a whole.
16 PRINCIPLES OF THE SCIENCE OF CREATIVE INTELLIGENCE (SCI)	This course has its basis in understanding 16 specific principles of how the laws of nature operate together with how they emerge from the field of pure intelligence, as universal principles of creative intelligence.
THE GREATNESS COURSE	The greatness course provides an opportunity for every student to start with the 'end in mind' to develop a plan for how they wish to develop their inner human qualities to achieve their life objectives. The course allows the time to think through the qualities of the greatest leaders, including those closest to us, to consider how to incorporate those qualities into our own lives. We will develop a plan to exhibit the most ideal type of behaviours as we design how to live our 'best life'.
MAHARISHI YOGA ASANAS	This course teaches a set of relaxing physical stretch exercises to do daily. These relax the body, keep you flexible and trim, improve health, and develop 'mindbody integration'. Scientific research has been done on Maharishi Yoga Asanas and reveals the benefits to body-mind health. This practice is complementary to Transcendental Meditation to integrate mind and body.
EXPERIENTIAL LEADERSHIP	The purpose of this course is to familiarise students with current leadership approaches and to develop leadership skills such as facilitation skills, effective communication and negotiation skills. Examples from literature are used to illustrate the theme that outer success is based on inner development. The Science of Creative Intelligence provides the holistic underlying framework to understand the source, course and goal of leadership. The course will draw from local African approaches, and considers global best-practice leadership approaches.
DIGITAL LITERACY OR FUNDAMENTALS OF COMPUTER OR COMPUTER END-USER	The goal of Digital Literacy is to learn basic computer concepts and skills so that you can use computer technology in everyday life. This will help you to develop new social and economic opportunities for yourself, your families, and your communities. Whether you are entirely new to computing or have some experience, this curriculum will help you develop a fundamental understanding of computers. From using the Internet, to sending e-mail, to creating a résumé, the Digital Literacy Curriculum helps you develop the essential skills you need to begin computing with confidence. Upon successful completion of this course, students will earn a Microsoft Digital Literacy certificate.
BUSINESS FUNDAMENTALS	The purpose of this course is to provide students with a high-level understanding of the world of business, and the components of academic business disciplines. The course provides an understanding of the role-players and stakeholders, and offers experiential analysis to understand the challenges of management, and what makes a great leader, manager, or administrator.

## SUBJECTS

SELF MANAGEMENT	This course is a pathway towards achievement and fulfilment of higher states of consciousness. This is a course of self-discovery – discovering your “small self” and answering the question – <b>Who am I?</b>
FOUNDATION MATHS LITERACY	A series of Level 2, 3 and 4 in Foundational Mathematical Literacy will provide the foundation for further development of mathematical literacy contexts and mathematical concepts that may be specific to an occupation or trade.
FOUNDATION ENGLISH LITERACY	A series of Levels 2, 3 and 4 in Foundational English Literacy will provide the English language skills, processes, knowledge and practices that will help you to deal confidently and successfully with formal occupational training.
PRACTICUM	Practicum objective is to work hand in hand with the hospitality department in keeping the campus clean and presentable. Students learn the responsibility of taking care of their environment during practicum. The course also aims to instil a sense of community amongst the MII students.
ENGLISH FLUENCY	Enhance your reading-for-meaning skills. The Program systematically enhances the development of core vocabulary components which facilitate and improve reading fluency, comprehension and cognitive skills – including retention and lateral thinking skills. The program also facilitates the correction of eye-tracking difficulties that students may have

Once a learner has completed Foundation (phase 1) they will have an opportunity to apply for further studies with the Maharishi Invincibility Institute. Please refer to the following documents for further information on the programmes:

1. [The Academy brochures for more information on the Academies as well as the MII Prospectus](#)
2. [The MIU handbook for application to study with MIU via distance education](#)





# EDUCATIONAL AND LEGAL STATUS

The Maharishi Invincibility Institute NPC

- A registered Non Profit Company, CIPC Registration Number 2015/133285/08
- A registered PBO (public-benefit organisation): 930056187.
- A Section 18A tax-exempt organisation compliant with the requirements of Part 1 of the 9'th Schedule of the Income Tax Act
- A registered high school with the Department of Basic Education with GDE (Gauteng Department of Education) registration number: 700400269, which is also the DBE EMIS number for the school
- A registered Private College with the Department of Higher Education (DHET No. 2021/FE07/11 / Exam Centre No. 0899993885
- An authorised Maharishi International University Study Centre, offering access to globally-accredited degrees.
- An authorised Skills Development Training Provider, Registered with the ServicesSeta Registration No. 6595
- A 100% BEE contributor,
- A member of international 'Teach a Man to Fish' network of self-sustaining education institutions

**Thank you to Anglo American and all our Partners!**

*The Maharishi Invincibility Institute wishes to thank Anglo American for their generous donation of 9 Ntengi Piliso Street and 40 Fox Street, providing magnificent locations for education in downtown Johannesburg for students from throughout Africa.*



# CONTACT DETAILS

HELLO!

EDUCATION TOWN JOHANNESBURG	9 Ntemi Piliso Street, Johannesburg 58 Marshall Street, Johannesburg 40 Fox Street, Johannesburg 4 Ntemi Piliso Street, Johannesburg
EZEMVELO DURBAN	Ezemvelo Nature Reserve, Bronkhorstspuit 32 Main Avenue, Maidstone, Tongaat.
TELEPHONE	Johannesburg: +27 11 492-0005   Ezemvelo: +27 (0) 13 680 1399   Durban: +27 31 301 2066
WEBSITE	<a href="http://www.maharishiinstitute.org">www.maharishiinstitute.org</a>
Ezemvelo Nature Reserve	<a href="http://www.ezemvelo.co.za">www.ezemvelo.co.za</a>
Invincible Outsourcing	<a href="http://www.invincibleoutsourcing.org">www.invincibleoutsourcing.org</a>
Maharishi International University, USA	<a href="http://www.miu.edu">www.miu.edu</a>

